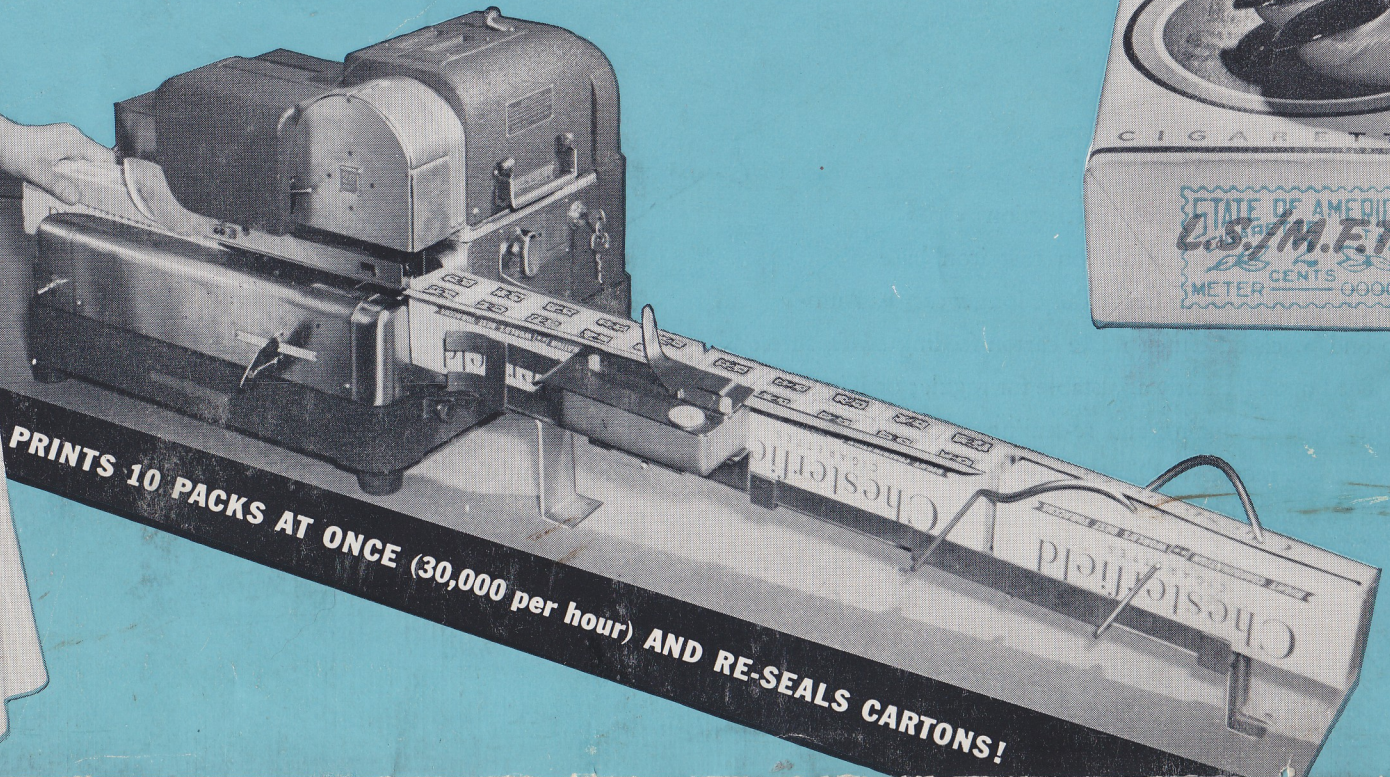




THE NEW PITNEY-BOWES AUTOMATIC, ELECTRIC

CIGARETTE TAX-STAMPING MACHINE



PRINTS 10 PACKS AT ONCE (30,000 per hour) AND RE-SEALS CARTONS!

Prints State or City Cigarette Tax Stamps... 10 Packs at a Time!

STAMPING SPEED: 30,000 PACKAGES PER HOUR

All you do is feed the slit-open cartons into the streamlined hopper. The machine does the rest—automatically. In *one* split-second operation, it imprints *ten* "metered" tax stamps directly onto the cellophane or other wrappers. At the same time, it does its own tax bookkeeping in visible meter registers, re-glues the carton flaps, and re-seals the cartons, ready for re-packing in cases.

There's no wetting and waiting, no soaking and sticking, no muss or mess... because there are no stamps to buy, store, handle, count, protect—or stick!

Here is the fastest, safest, least expensive method of paying (and collecting)

state or city cigarette taxes—and the most efficient machine for the job.

Compared to present "soak-and-stick" methods, the savings are tremendous. The new Pitney-Bowes CIGARETTE TAX-STAMPING MACHINE can better the production rate of ordinary methods approximately *fifteen* times!

The machine's "cruising speed" is 30,000 packages per hour with normal unpacking and handling. The top potential is, of course, much higher.

Hundreds of firms from coast to coast now know the benefits and savings of this modern method of paying cigarette stamp taxes. The equipment pays its way many times over. And they like its convenience, too. For whether it's postage or taxes, "it's easier to print a stamp than it is to stick one!"

Imprints 10 Stamps Simultaneously!

RE-GLUES
CARTONS

MECHANICAL FEATURES:

- Clerks need only the simplest instruction
- Machine built of finest materials, on cast iron base
- Moving parts designed for heavy duty, long wear
- Automatic trip and precision clutch make carton-feeding swift, sure and simple
- Feed track instantly adjustable for regular or King Size
- Inking is automatic, so is re-gluing and re-sealing
- Machine electrically driven by 1/8 h.p. AC or DC motor
- Dimensions: 16" by 18" by 14" high; carton chute extends 36" beyond
- Built by world's largest makers of mailing and revenue machines
- Backed with nationwide service from Pitney-Bowes company-owned branches in 59 principal cities.

RE-SEALS CARTONS, TOO

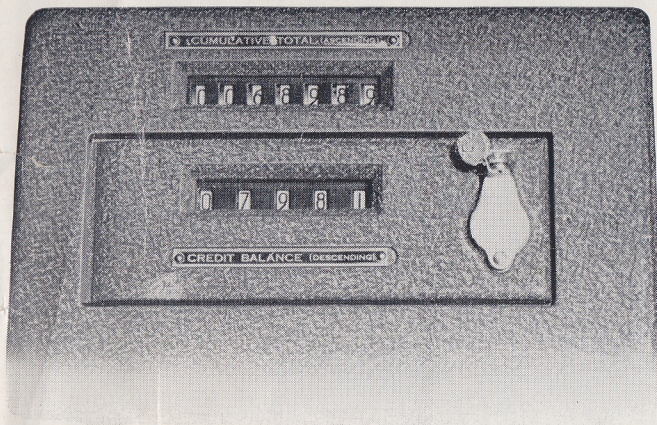
"Magic fingers," with no moving parts, close and re-seal carton flaps as they go through chute.

Printed in U.S.A.
KV, 54910

Made by Pitney-Bowes, Originators of the Postage Meter & Metered Mail

... 15 Times Faster Than "Soak-and-Stick" Methods... and Safer, Too!

PLUS AUTOMATIC ACCOUNTING



... and 100% Stamp Protection

The Tax-Stamping Meter, like the Postage Meter, is a detachable and portable unit of the machine. It contains the printing and recording mechanism.

To make tax payments, you simply send your Meter to the proper revenue office to be "set" for any desired amount up to 99,999 taxpaid carton units. There are no stamps as such. A quick meter "setting" covers the transaction, replacing sheets of loose stamps. The accounting is automatic and under government lock and seal. The Meter is fraud-proof, tamper-proof, fool-proof!

Two meter registers or counters show at a glance the amount used, and the amount on hand. The "Cumulative Total" records tax payments made; the "Credit Balance," what's left. For example: where tax is 2¢ per pack, a "Credit Balance" reading of 2,240 shows there's enough to stamp 2,240 cartons or 22,400 packages. In money, it shows a stamp "inventory" of \$448.00 (2,240 cartons × 20¢).

"Metered" tax stamps are non-negotiable, with individual meter numbers and other controls. They don't even exist until printed directly on packages. They can't be damaged, lost, wasted or stolen.

And they can't be removed from taxpaid cigarettes, re-affixed and fraudulently re-used on "bootleg" products. Nor can they "shed" or fall off, thereby perhaps exposing your firm to embarrassment. The Metered Tax-Stamping System is not only the fastest way to pay cigarette taxes—it's the *safest*.



The "Metered" Tax-Stamping System Is Widely Used

Hundreds of Cigarette Wholesalers, Jobbers Save Time, Money as 33 States and 36 Cities now Authorize Pitney-Bowes Tax-Stamping Meters

The Pitney-Bowes **METERED TAX-STAMPING SYSTEM** was first applied to cigarette taxes in 1937. Its meters are tax-paying cousins of the company's familiar Postage Meters through which the U. S. Post Office collects over \$393,000,000 annually ★ Today, hundreds of wholesalers, jobbers and distributors are speeding their cigarette tax-stamping operations, saving time, money and trouble—with Pitney-Bowes machines and meters ★ The new system has already been authorized by 33 of the 40 states now having cigarette taxes, and by 36 of the cigarette tax-levying cities and one county as well:

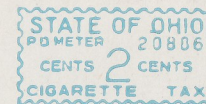
STATES

- | | | | |
|-------------|-------------|---------------|----------------|
| CONNECTICUT | KENTUCKY | NEW HAMPSHIRE | RHODE ISLAND |
| FLORIDA | LOUISIANA | NEW JERSEY | SOUTH CAROLINA |
| GEORGIA | MAINE | NEW MEXICO | SOUTH DAKOTA |
| IDAHO | MINNESOTA | NEW YORK | TENNESSEE |
| ILLINOIS | MISSISSIPPI | NORTH DAKOTA | UTAH |
| INDIANA | MONTANA | OHIO | VERMONT |
| IOWA | NEBRASKA | OKLAHOMA | WASHINGTON |
| KANSAS | NEVADA | PENNSYLVANIA | WEST VIRGINIA |
| | | | WISCONSIN |

CITIES

- | | | | |
|-------------------|-----------------|----------------|-------------------|
| COLORADO | FLORIDA | MISSOURI | MISSOURI (contd.) |
| Aurora | Apalachicola | Columbia | St. Louis |
| Denver | Gainesville | Fayette | Sedalia |
| Grand Junction | Lakeland | Fulton | Springfield |
| Meeker | Miami | Hannibal | Washington |
| Pueblo | St. Augustine | Independence | |
| Trinidad | St. Petersburg | Jefferson City | WYOMING |
| Walden | West Palm Beach | Kansas City | Laramie |
| Steamboat Springs | Key West | Mexico City | Thermopolis |
| MARYLAND | NEW JERSEY | St. Charles | Worland |
| City of Baltimore | Atlantic City | St. Joseph | Pine Bluffs |
| Baltimore County | | | |

TYPICAL "METERED" CIGARETTE TAX STAMPS — 1/8 Actual Size



... World's Largest Maker of Mailing and Tax-Stamping Machines

AND TO SPEED YOUR MAIL AND PARCEL POST... THE POSTAGE METER



PITNEY-BOWES, Inc.
Stamford, Connecticut

New Postal Convenience—Prints postage on your mail, in your own office! As and when wanted... day or night... for any kind or class of mail; including Airmail, Special Delivery, Parcel Post. Saves trips to the Post Office. Puts a mechanical "post office" at your fingertips!

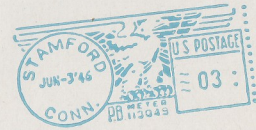
Saves Time, Effort—Stamps and seals your mail simultaneously. No more messing around with loose stamps... no more stamp-sticking and envelope-wetting. The office mail gets out earlier. The office people get out earlier too!

Speed in Post Office—When you Meter your mail, it goes the fastest way. Already postmarked, and needing no facing or canceling, Metered mail often catches earlier trains and planes... for quicker delivery at destination.

Stops Stamp Leaks and Losses—Ordinary postage stamps (and stamped envelopes) are "paper money." Meter Stamps are non-negotiable. Postage in the Meter is theft-proof, waste-proof, fool-proof; can't be begged, borrowed or stolen. Postage-savings usually range from 15% to 30%, sometimes more.

Does Own Bookkeeping—Visible registers, under fool-proof Post Office control, indicate at a glance the amount of postage on hand, and the amount used. Provides accurate postage records—daily, weekly, monthly—or by departments.

Parcel Post Advantages—plus a date of mailing on every parcel post package—even on regular fourth-class mail. The date tells your customers you kept your shipping promise, regardless of



[3/8 actual size]

unavoidable delays in transit. And printing Metered parcel post stamps to order... is far faster and safer than the old tin stamp box or stamp drawer.

Prestige Postage—Replaces the old-fashioned adhesive stamp with the Modern Meter Stamp, seen on America's most important business and financial mail for a quarter-century. One-fifth of all U. S. Mail is now Metered Mail!

"Postmark Advertising"—Makes your mail sell for you... sells your product, your service or a worthy cause. "Postmark Ads" are printed optionally with the Meter Stamp at no extra cost, except for the printing plates, which are interchangeable. Used by leading advertisers... and a major "plus" for any Metered Mailer! (see above).

PITNEY-BOWES, INC.

WORLD'S LARGEST MAKER OF MAILING AND TAX-STAMPING MACHINES

STAMFORD, CONNECTICUT

BRANCHES IN 86 PRINCIPAL CITIES

