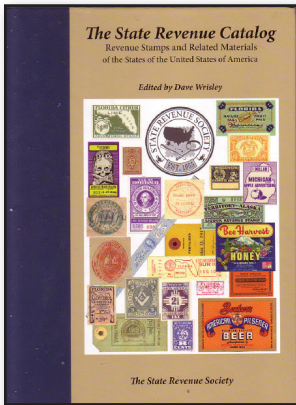


SRS Publications

To order SRS publications, or stamps, follow the Sales Service instructions (next page) !



Pennsylvania Local Deed Tax Stamps Catalog (2015),

Robert Conley, Editor, 72 pp
 SRS/ARA Members \$22.00
 (Non-member, \$27)

The State Revenue Catalog (2013)

Dave Wisley, Editor, 733 pp, hard bound
 SRS/ARA Members \$77.00
 (Non-member, includes SRS membership, \$97)

SRN on DVD, State Revenue News 1959-2016,

Members \$20.00
 (Non-member, 1959-2010 \$25)
 Post paid domestic.
 Outside U.S. add \$10 shipping.

Sales of this item are currently suspended.

State Revenue News Back Issues: Back issues before 2014 are no longer available as single issues. Those from 2014 to date are available at \$2 each. The only available older back issues are:

- 1980-1983
- 1994-1996

These perfect-bound bound volumes are \$10 each, postage paid.

Alabama City, County and Municipal Stamp Catalog

Scott Troutman, 2001, 35 pp \$7.00
 (Non-member \$10)

Handbook of Fish & Game Stamps (1937-1971)

E. L. Vanderford 1983, Richoux reprint (2011), 280 pp \$17.95

The Kansas Quail Stamps

David Lucas, 1999, 48 pp spiral bound \$14.00
 (Non-member \$17)

Album Pages

I am designing state revenue stamp album pages. The pages include the SRS-copyrighted 2013 Catalog numbers per a license from the SRS. They are formatted for 8½" x 11" paper, are in color, and include spaces for hunting and fishing stamps. Pages are now available for the following states:

Alabama	Alaska	Arizona
Arkansas	California	Colorado
Connecticut	Delaware	District of Columbia
Florida	Georgia	Hawaii
Idaho	Illinois	Indiana
Iowa	Kansas	Kentucky
Louisiana	Maine	Maryland
Massachusetts	Michigan	Minnesota
Mississippi	Missouri	Montana
South Carolina	South Dakota	Wisconsin

The plan is to add about 12 states per year in alphabetical order. If you are looking for a particular state that is not yet done, I will consider changing the priority for you.

Pages are available on a DVD or by email. The cost is \$4.99 plus shipping (\$2.50 US, \$5.00 international, per DVD). To order or get more information, please contact me:

Bert Bonem
 P. O. Box 8813
 Brea, CA 92822
 bbonem@gmail.com
 714-683-8275

Update Corner

The **Update Corner** shows selected items from the unillustrated cumulative catalog update list.



Cumulative Update List

The transfer of files to new catalog editor, Jeff Hofius, is not yet finalized. Accordingly, there are no new updates to report at this time- Ed.

SRS Sales Service

*The following stamps are available to members, first-come-first-serve. **New arrivals are highlighted in color.** Limit of 2 each per member. Refunds will be sent if an item is sold out and cannot be re-stocked.*



<p>Alabama</p> <p>Cigarette</p> <p>Rainsville 2c decal/pane \$0.50</p> <p>Rainsville 4c decal/pane \$0.50</p> <p>City of Satsuma 2c decal \$0.50</p> <p>City of Satsuma 2c block of 4 \$1.00</p> <p>City of Satsuma 2c pane of 10 \$2.00</p> <p>Marijuana</p> <p>1 gm \$3.50</p> <p>5 gm \$17.50</p> <p>10 gm \$35.00</p> <p>20 gm \$70.00</p> <p>Playing card 10c pane/10 \$0.10</p> <p>Tobacco</p> <p>Double Springs 4c \$0.25</p> <p>Arizona</p> <p>Fertilizer FT10a, 5 lbs \$0.50</p> <p>California</p> <p>Cigarette decal, blue, black & red \$0.25</p> <p>Cigarette self-adhesive, black & orange (current issue) \$0.25</p> <p>1960 fishing stamp, used \$0.50</p> <p>Colorado</p> <p>2007 Habitat \$5 \$5.25</p> <p>2011 Waterfowl \$5 \$5.00</p> <p>2013 Waterfowl \$5 \$5.00</p> <p>Town of Walsenberg cig. 5c \$0.10</p> <p>Connecticut</p> <p>Marijuana \$10.00</p> <p>Florida</p> <p>Documentary</p> <p>D88, 2c used \$0.25</p> <p>D89, 5c used \$0.25</p> <p>D91, 30c used \$0.25</p> <p>D94, 75c used \$1.00</p>	<p>Georgia</p> <p>City of Griffin .05 excise tax Free</p> <p>City of Elberton 5c excise tax \$0.50</p> <p>Idaho</p> <p>Marijuana (2011) \$3.50</p> <p>Iowa</p> <p>Marijuana (2012 \$5) \$5.00</p> <p>Kansas</p> <p>Drug \$10 \$10.00</p> <p>Drug \$50 \$50.00</p> <p>Eggs (7) E79A-E83 \$5.00</p> <p>Official Sample Seal \$0.50</p> <p>Kentucky</p> <p>Marijuana \$3.50</p> <p>Louisiana</p> <p>Marijuana \$3.50</p> <p>Maine</p> <p>Beer B1 dark blue roul \$0.10</p> <p>Massachusetts</p> <p>Marijuana (roulette) \$3.50</p> <p>Marijuana (die cut) \$3.50</p> <p>Michigan</p> <p>Cigarette decal with hologram & QR code (current issue) \$0.50</p> <p>Minnesota</p> <p>Deed D35 40c \$0.25</p> <p>Deed D52 20c \$0.25</p> <p>Marijuana (2013) \$3.50</p> <p>Missouri</p> <p>Cape Girardeau 3c cig. blk/4 \$0.12</p> <p>Nebraska</p> <p>Drugs \$10 \$10.00</p> <p>Drugs \$50 \$50.00</p> <p>New York</p> <p>Habitat 2016-17 (res.) \$5.00</p> <p>Habitat 2016-17 (non-res.) \$5.00</p> <p>Stock transfer ST122 mint \$1.00</p> <p>Stock transfer ST124 mint \$1.00</p>	<p>North Carolina</p> <p>Marijuana 1g stems & stalks \$0.40</p> <p>Marijuana 1g germinating seed & plants \$3.50</p> <p>Illegal mash \$1.28</p> <p>Illegal liquor \$12.80</p> <p>Illicit mixed beverage \$20.00</p> <p>Illicit liquor by the drink \$31.70</p> <p>Cocaine \$50.00</p> <p>Controlled substance 10 dose \$50.00</p> <p>Oklahoma</p> <p>1964 1 pint liquor L5</p> <p>Single \$0.25</p> <p>Pair \$0.50</p> <p>Marijuana \$10.00</p> <p>South Carolina</p> <p>Marijuana 1 gm \$3.50</p> <p>Marijuana 10 gm \$35.00</p> <p>Tennessee</p> <p>Ammunition (new) .10 ea \$0.10</p> <p>Pairs \$0.20</p> <p>block/4 \$0.40</p> <p>Marijuana stems & stalks DRM1 \$0.40</p> <p>Marijuana (buds) DRM2 \$3.50</p> <p>Illicit alcohol DRC1 \$12.80</p> <p>Illicit alcohol DRC2 \$31.70</p> <p>Cocaine DRC3 \$50.00</p> <p>Low value street drugs DRC4 \$50.00</p> <p>Seed 1c SE21a MNH \$0.50</p> <p>Texas</p> <p>Marijuana \$3.50</p> <p>Utah</p> <p>B16 military beer MNH \$1.00</p> <p>Virginia</p> <p>Wine W61 used \$0.25</p>
---	---	---

- Add 50 cents return postage or a SASE on all orders. Add additional funds if special USPS services are requested such as registered, or certified mail.
- Send orders with payment to: Terence Hines, Box 629, Chappaqua, NY 10514-0629 (make checks payable to the State Revenue Society) OR
- Email orders to terencehines@aol.com and use PayPal (add 3% to your total bill to cover PayPal fees). Send PayPal payment to srstreasurer@comcast.net.