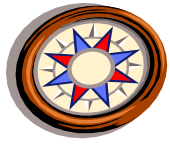


# The State Revenue Society Website



## Navigation Tutorial



---

*How do you find what you want on the State Revenue Society website?*

*Getting here is the first step. So far you dun good!*

---

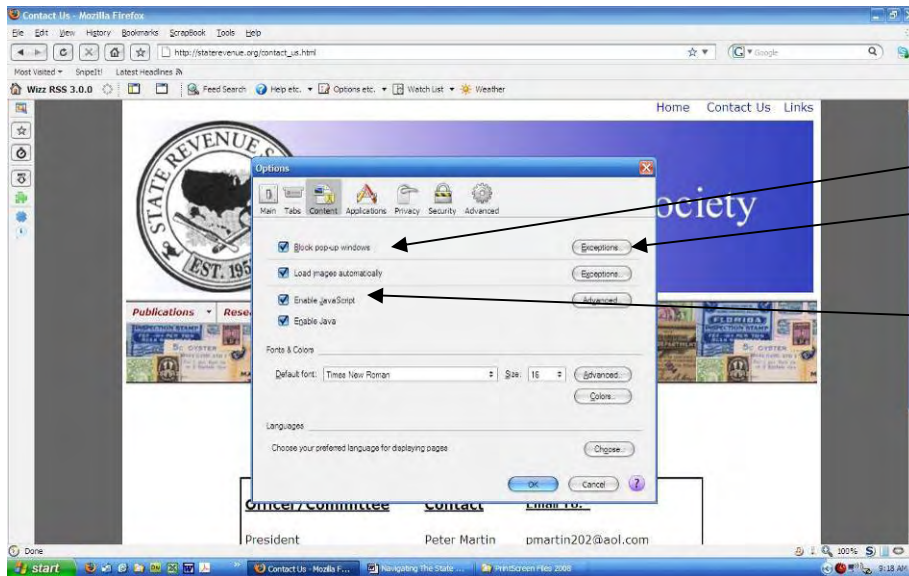
### Who Will Benefit from This Tutorial?

This tutorial is for those who just want to know a little more about the navigation strategy for the State Revenue Society website so they can efficiently find information. It is also for those who are relatively new to the Internet and working with Internet browsers, or maybe those who have recently changed browsers.

### Browser Set-up (You may be able to skip this section)

***If you can see the stamp slideshow on the Home Page, you can probably skip this section!***

You must allow Active Content (JavaScript) for the Main Navigation Bar (and the Home page stamp slideshow) to work. Also allow pop-up windows for this website. Your browser will tell you if you have these restrictions in place. If the example functions above aren't operating, the browser is doing it! If so, just enable "Allow for this site", or list the website under "Exceptions", depending upon your browser. The screenshot below shows where to set these things in Firefox.



Pop-up windows blocked. Allow SRS website under "Exceptions".

JavaScript allowed.

**Browser selection to allow JavaScript, shown in Firefox. Here the browser will generally block pop-up windows, but allowing pop-ups on a particular site is accomplished by typing in the website address after clicking "Exceptions". The selection window shown is found under Tools=>Options=>Content.**

### Main Navigation Bar (or Menu)

Each page on this site has the same 3 basic navigation tools. The first is the main navigation bar. You can get to any page on this website from the main navigation bar located directly under the blue banner and SRS logo. Below is a screenshot of the website home page showing the location of the Main Navigation Bar.



Main Navigation Bar

*Location of the Main Navigation Bar*

Now that we're sure you have your browser set up correctly, this is how the main navigation bar works. Hovering your browser's pointing device over the main navigation categories of "Publications", "Research", etc. will activate a "drop-down menu" of secondary pages available within that main category. Sometimes there will be tertiary pages available within a secondary drop down menu. Clicking on any of these secondary or tertiary page menu labels will take you to that page. Below is a screenshot of a website page with the browser pointer hovered over "Research", showing the drop down menu with secondary pages available.



Drop-down menu showing links to secondary pages

### *The Main Navigation Bar drop-down menus*

### Navigation Tools in the Header and Footer

In addition to the main navigation bar, there is a second way to go to new pages. Several useful links are located in the header and footer of each web page on this site. For example, you can find links to primary Society contact people in both header and footer, and to email the Webmaster (me) in the footer. You can get to this tutorial from the Navigation & Site Map link in the header. Below is a screenshot of a website page showing the location of the top header, and bottom footer where you will find these other links.



### Returning to Recently Visited Pages

A third way to navigate to other pages is to use a history of recent pages visited. In addition to using the main navigation menu to select a specific page, returning to a previous page can be accomplished either with your browser's back arrow, or by using the “breadcrumbs” or “croutons” located immediately under the collage of state revenue stamps.

You unknowingly dropped these croutons as you visited various pages within the site, so you could easily find your way back a few steps! The screenshot below shows the croutons. The present page is “Contact Us”; the previous was “State Revenue Society Home”; the next previous was “Officers & Board”, and the third previous was “State Revenue Society Home. Clicking on the appropriate crouton can jump you back 1, 2, or 3 steps at a time.

Home Contact Us Navigation & Site Map Links

STATE REVENUE SOCIETY  
EST. 1955

State Revenue Society

Publications Research Marketplace Resources About

State Revenue Society Home > Officers & Board > State Revenue Society Home > Contact Us

**State Revenue Society**  
Primary Contacts

Officer/Committee	Contact	Email To:*
President	Peter Martin	pmartin202@aol.com
Secretary	Kent Gray	staterivs@comcast.net
Editor, State Revenue News	Scott Troutman	smtroutman@atlanticbb.net
Membership	James Timpson	jtimpson1@verizon.net
Publications & Sales	Terence Hines	terencehines@aol.com
Webmaster	Dave Wrisley	dwrisley@verizon.net

\*Out & paste address. Doing so rather than the website using hyperlinks respects the privacy of the individual concerned.

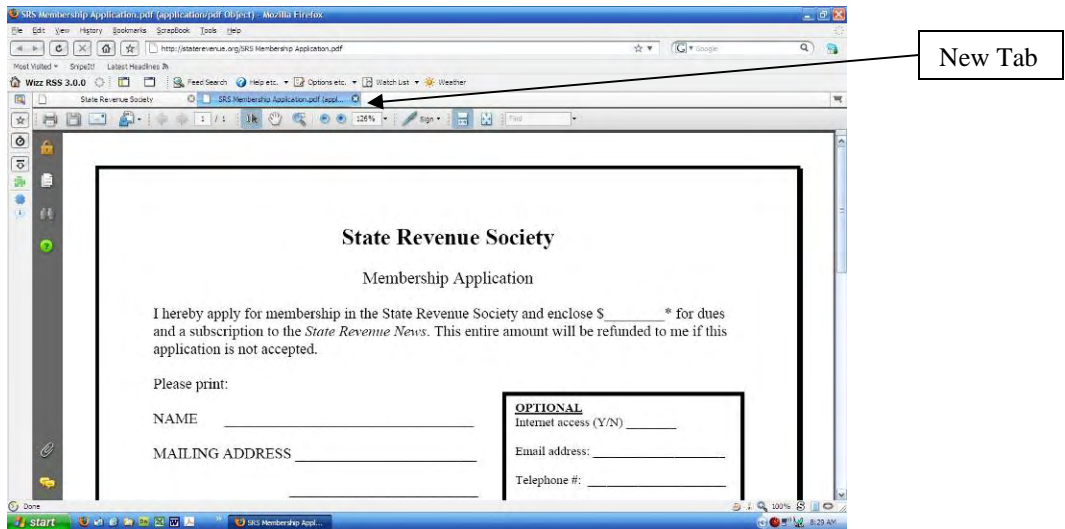
© 2008, State Revenue Society. All Rights Reserved. [Contact Us](#) [Webmaster](#) (95-07166-014)

Croutons

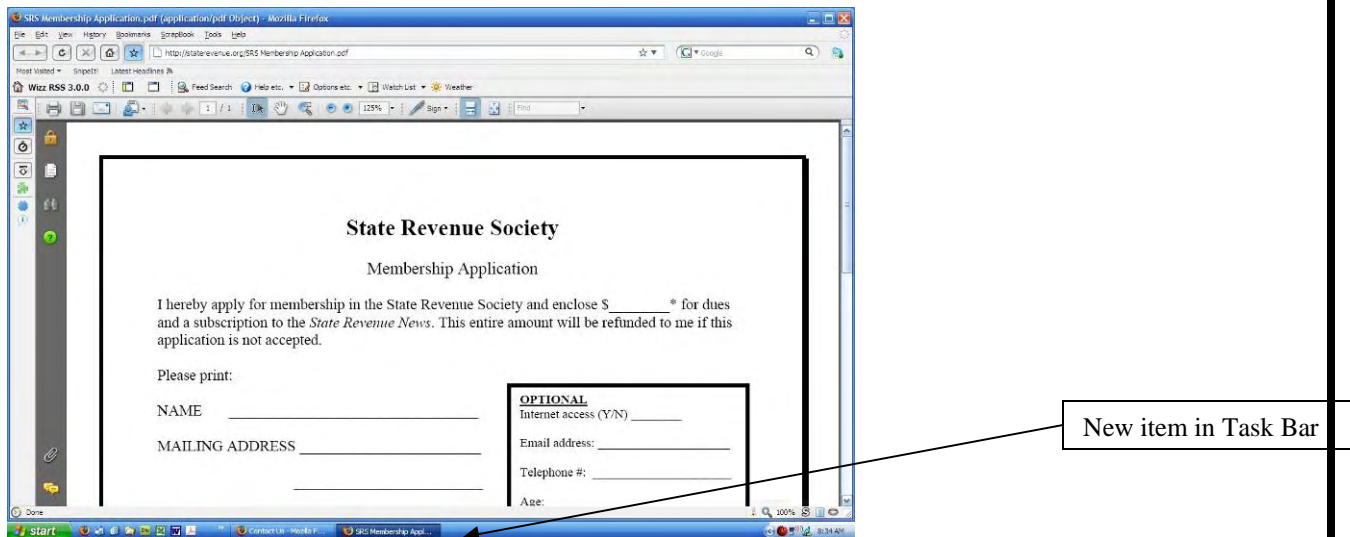
### Linking to Reference Documents or External Websites

In order to keep the main navigation bar relatively simple, all links to other external websites, and to almost all reference documents are found through a relevant subject page. An example of an external website is the American Revenue Association site. An examples of reference documents are the Membership Application, or the rules for consigning material to the members' only auctions. For example, you find links to other stamp websites from "Links" or under "Resources"> "Links", and a Membership Application under "Join"> "Application".

For your convenience, external web pages, and all reference documents open in new browser windows. This makes it very easy to return to the SRS website where you will again see the familiar SRS website main navigation bar. Returning is as easy as closing the external site tab or document tab, or by closing the active item on your operating system's Task Bar. Below are screenshots showing how new windows show up in a browsers set up to open new pages in new windows, or in new Tabs.

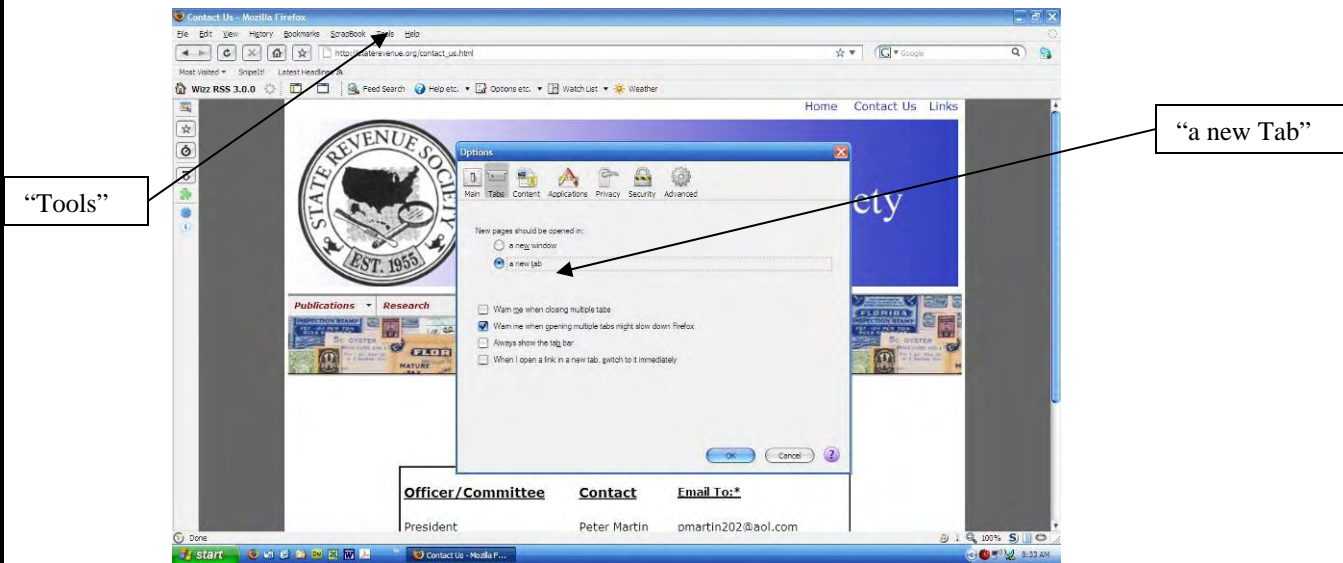


***Reference document shown open in a new Tab***



***Reference document shown open on the Task Bar***

An example of where to set up Tabs or windows in Firefox is shown below.



Browser selection to open new pages in a new Tab. This selection is found under “Tools”>“Options”

That’s It!

That’s all you really need to know. Now close this page, and go out and make something happen. Try different ways to find your way around. Find your favorite.